



BREAD & BUN SLICERS

BLADES FOR SLICED



BANDSAW BLADES
& BANDKNIFE FOR
FOOD INDUSTRY

Bandsaw blades produced from high quality steel, assuring the best performance of slicing in bakery products. The optimal choice of bandsaw, results in clean cuts without crushing or product breakages and with the minimum waste. Slicer blades are produced with strength welds, the highest length accuracy and precision in order to assure an uniform tension for every blade. It produces regular slices. Consistent blade tension minimize irregular width slices and breakages.



CV

- Tooth size 12,5 mm.
- CV is the most common tooth for bread and bun slicing.
- Ideal for slicing whole wheat, **french bread and other hearty breads**. Ideal also for slicing breads containing nuts and seeds.
- This tooth reduces the smashing and crumbling of breads while providing clean and sharp cut time after time.



CV 6

- Tooth size 6 mm.
- It has a smaller tooth. CV 6 is the best for buns, rolls, muffins and in general for slicing in smaller slicer machines with lower lineal speed.



CV DB

- Tooth size 12,5 mm.
- CV DB has the same shape that CV but with a soft secondary bevel on both sides. It produces a smoother finish on soft texture bakery products.



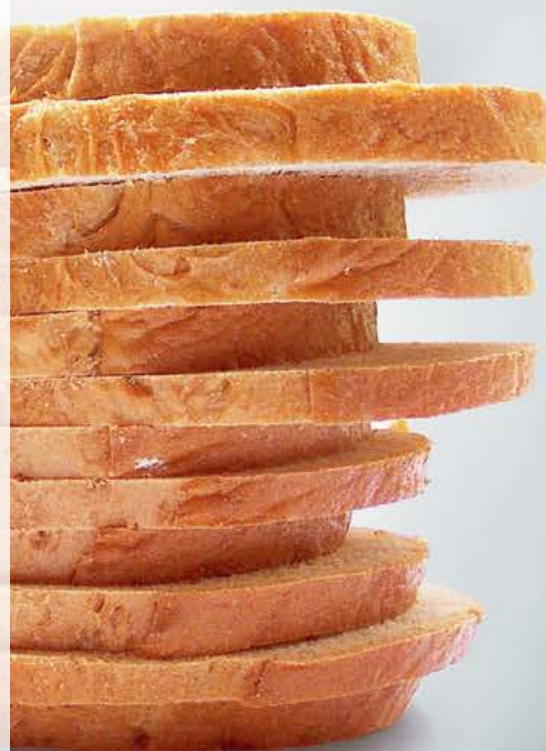
V15 DB

- Tooth size 1,7 mm.
- This tooth and the bevel gives a superior and silky finish with cleanly defined edges. This blade stays sharper longer and requires less honing compared commercial bakery band blades.



CV W

- Tooth size pattern 12 mm.
7 mm Concav + 5 mm Microteeth.
- This pattern tooth provides a **clean and crush-free slice**.
- This pattern tooth work properly in a wide variety of retail and wholesale bread slicing applications, crusty, hearty, nutty, and full grain. Even for avoiding crush when slicing warm sourdough loaves.





BREAD & BUN SLICERS

RECIPROCATING BLADES FOR SLICING BREAD



BANDSAW BLADES
& BANDKNIFE FOR
FOOD INDUSTRY

- Reciprocating blades, produced from high carbon steel, to assure a longer-lasting cutting.
- Available with black and red coating to prevent the product adheres to the blade and achieving greater hygiene.
- Available with different holes sizes, pins and rivets.
- Suitable for most machines. Wabama, JAC, Daub, National, Berkel, Maho, Oliver, VLB, etc.



We make blades adhering to our customers' designs or we modify them based on customer cutting requirement, assuring the highest performance and achieving the highest volumes of production.

For more information and/or orders, please contact us: info@metalurgicadesierras.com

☎ +34 976 57 23 24

📠 +34 976 57 27 63

